



SINGAPORE 2010 YOUTH OLYMPIC GAMES
SAILING COMPETITION
NOTICE OF RACE

Organizing Authority

The International Sailing Federation (ISAF) and the Singapore Youth Olympic Games Organizing Committee (SYOGOC)

14-26 August 2010

National Sailing Centre, SINGAPORE

1 RULES

- 1.1 The Singapore 2010 Youth Olympic Games Sailing Competition will be governed by the rules as defined in The Racing Rules of Sailing (RRS).
- 1.2 The Olympic Charter of the International Olympic Committee (IOC) will apply.
- 1.3 No national authority prescriptions will apply.
- 1.4 Appendix P of the RRS will be changed in the Sailing Instructions. The changes can be seen in Paragraph 16 of this Notice of Race.

2 ELIGIBILITY AND ENTRY

- 2.1 To be eligible for participation in the Singapore 2010 Youth Olympic Games Sailing Competition, an athlete, coach or trainer shall comply with the Olympic Charter, as well as with the rules of the ISAF, and shall be entered by his NOC.
- 2.2 To be eligible for participation in the Singapore 2010 Youth Olympic Sailing Competition an athlete must have been born between 1 January 1994 and 31 December 1995.
- 2.3 Every athlete shall be a national of the country of the NOC that is entering him. An athlete's nationality is determined according to Rule 42, and the Bye-law to Rule 42, of the Olympic Charter.
- 2.4 ISAF eligibility according to ISAF Regulation 19 is required of all athletes.
- 2.5 Each athlete shall be registered as an ISAF Sailor on the ISAF website www.sailing.org.
- 2.6 Notification of changes to entry details shall be delivered by the NOC to the Organizing Authority before 1200 on 10 August 2010. No substitution of athletes will be allowed after this time.



3 IDENTIFICATION AND ADVERTISING

- 3.1 Clothing and equipment worn or used by athletes and support personnel shall be in compliance with Rule 51, and the Bye-law to Rule 51, of the Olympic Charter in force as from 7 July 2007 and with the IOC Manufacturer Identification Guide for the 2010 Youth Olympic Games.
- 3.2 With the exceptions in paragraph 3.1, a boat shall not make any form of publicity or propaganda, commercial or otherwise, including the display of a boat name, home port or club name.

4 ADDITIONAL IDENTIFICATION

- 4.1 Each boat shall carry on the sail her national letters and national flag and may carry the athlete name. These will be supplied by the Organizing Authority and applied under its direction. No other sail numbers or letters may be displayed. This changes RRS G1.1.
- 4.2 Boats sailing in the Techno 293 Girl and Byte CII Girl classes shall carry a red or black rhombus. These will be supplied by the Organizing Authority and applied under its discretion.
- 4.3 All boats, but not boards, shall carry 'Games' logos and national letters on each side of the hull. These will be supplied by the Organizing Authority and applied under its direction.
- 4.4 The Organizing Authority may supply and apply to the sails other 'Games' logos or identification marks.
- 4.5 While afloat, athletes shall wear bibs provided by the Organizing Authority displaying their national Olympic committee (NOC) code on the outside of all other clothing and equipment.

5 QUALIFICATION

- 5.1 An NOC may send a maximum of two (2) athletes, one (1) male and one (1) female athlete. Except for the provisions laid out in paragraph 5.5.
- 5.2 The maximum number of entries ('entry quota') for each of the 4 Youth Olympic events will be as given in the following tables, based on a total of 100 athletes (50 Boys and 50 Girls):

MEN'S EVENTS (2)	QUOTA	WOMEN'S EVENTS (2)	QUOTA
Boys Windsurfer (Techno 293 – 7.8m ² sail)	20	Girls Windsurfer (Techno 293 – 7.8m ² sail)	20
Boys 1 Person Dinghy (Byte CII)	30	Girls 1 Person Dinghy (Byte CII)	30

QUOTA	QUALIFIED VIA IF	NOC UNIVERSALITY PLACES	HOST COUNTRY PLACES	TOTAL
Boys	42	7	1	50
Girls	42	7	1	50
TOTAL	84	14	2	100

5.3 The Qualification System entry quota system is outlined in the table below:

YOQE QUOTAS	BW	GW	B1PD	G1PD
Africa	1	1	2	2
Asia	2	2	3	3
Central & South America	2	2	2	2
Europe	4	4	7	7
North America & Caribbean	2	2	4	4
Oceania	2	2	2	2
World Championships	3	3	6	6
Host Nation / IOC Places	4	4	4	4
TOTALS	20	20	30	30

5.4 ISAF may modify the number of athletes in an individual event in consultation with SYOGOC, provided that the total number of 100 athletes is not exceeded.

5.5 An NOC may receive additional entry places as laid out in the Qualification System.

5.6 Full details of the Qualification System can be found on the ISAF website:

www.sailing.org/youtholympicgames

5.7 Final entries shall be submitted through the NOC to SYOCOG and shall be received no later than midnight (Singapore time) on 15 July 2010.

5.8 Confirmation of the entries will be sent to the NOC.

6 REGISTRATION

6.1 Athletes, coaches and team leaders shall complete an on-site registration form at the Sports Information Desk in the competition venue from 0900 to 1730 between 10 and 13 August 2010. Teams may send a team manager with all necessary documents to complete the registration. Athletes not registered within this period will not be allowed to participate in the sailing competition.

7 COMPETITION FORMAT

7.1 For each event the sailing competition will consist of an opening series and a final race.

8 SCHEDULE

8.1

Date	Time	Programme
10 – 13 August	0900hrs – 1800hrs	Distribution of Equipment & Training
14 August		Opening Ceremony
15 August	0900hrs – 1800hrs	Training
16 Aug 2010	1500hrs – 1800hrs	Practice Race
17 Aug 2010	1200hrs – 1800hrs	Racing
18 Aug 2010	1200hrs – 1800hrs	Racing
19 Aug 2010		Lay Day
20 Aug 2010	1200hrs – 1800hrs	Racing
21 Aug 2010	1200hrs – 1800hrs	Racing
22 Aug 2010		Lay Day
23 Aug 2010	1200hrs – 1800hrs	Racing
24 Aug 2010	1200hrs – 1800hrs	Racing
25 Aug 2010	1200hrs – 1800hrs	Final Race & Medal Ceremony
26 Aug 2010	0900hrs – 1300hrs	Reserve Final Race
		Closing Ceremony



- 8.2 Sixteen (16) races are scheduled for each event. Of the sixteen (16) races, fifteen (15) are scheduled as opening races and one (1) as a final race.
- 8.3 The scheduled time of the warning signal for the first race each day is 1200hrs.
- 8.4 A maximum of 3 races will be sailed each day.
- 8.5 On the last scheduled racing day for each event in the opening series, no warning signal will be made after 1600. On the scheduled final race day for each event, no warning signal will be made after 1630.

9 EQUIPMENT

- 9.1 All equipment will be supplied free of charge including the boat or board, rig and sails except for the equipment stated in Paragraphs 9.2, 9.3, 9.4, 9.5 & 9.6.
- 9.2 For the Techno 293 only: Competitors must bring their own outhaul and downhaul systems (ropes, cleats and pulleys), harness and harness lines.
- 9.3 For the Byte CII only: Competitors may bring their own tiller extension, shock chord, or line, to effect a specific modification as set out in Paragraph 9.8.
- 9.4 The Organizing Authority will not supply compasses or other tactical devices, wind indicators, buoyancy jackets, hiking pants, wet or dry suits or other personal equipment.
- 9.5 Athletes may bring and use the following equipment: sponge, hand bailer, water bottles (only to be attached to the boat with rope or tape), compass, wind indicators, including yarn or thread (may be tied or taped anywhere on the boat or sail, provided their fitting does not mark, pierce or damage the hull, deck, sails or spars).
- 9.6 For the Techno 293 only: Athletes may bring and use a container for holding beverages in accordance with RRS Appendix B.2.1 (b).
- 9.7 Adhesive tape may be used anywhere above the waterline, but the tape needs to be removable after the event without leaving any permanent damage. There shall be no writing with permanent markers directly on the supplied equipment. No wax shall be applied. Hulls, centreboards and rudders may be cleaned, but only with water and ordinary soap.
- 9.8 In the case of the Byte CII, boats shall be raced as supplied, including lines, except for those modifications described in Attachment 3, Byte CII Permitted Modifications. Any other modification to a boat or board shall not be made



unless authorized by the Organizing Authority.

10 CAMERAS AND ELECTRONIC EQUIPMENT

- 10.1 Boats may be required to carry cameras, sound equipment or positioning equipment as specified by the Organizing Authority.

11 MEASUREMENT

- 11.1 Measurement checks may be carried out by the race committee at any time on any boat or board to ensure compliance with the rules of the 2010 Youth Olympic Games Sailing Competition and class rules. In case of conflict between the class rules and the rules of the 2010 Youth Olympic Games Sailing Competition, the latter will take precedence.
- 11.2 Class rules on class association membership will not apply.
- 11.3 Failure of supplied equipment will not be grounds for redress. This changes RRS 62.1(a).

12 SAILING INSTRUCTIONS

- 12.1 The sailing instructions will be available at registration.

13 VENUE

- 13.1 The sailing competition venue will be the National Sailing Centre, Singapore.
- 13.2 On racing days (including any reserve day) the venue will be open from 0900 and entry will be allowed until one hour after the last protest time limit.
- 13.3 The venue will be closed on official Lay Days.
- 13.4 Attachment 1 shows the approximate location of the racing areas. Racing areas may be moved to other locations within the exclusion zone.

14 THE COURSES

- 14.1 The courses and target times will be as follows:
Techno 293: Trapezoid or Windward-leeward. A Slalom finish may be included. Target Time: 30-35 minutes
Byte CII: Trapezoid or Windward-leeward. A Slalom finish may be included. Target Time: 45-50 minutes
- 14.2 Attachment 2 shows the course diagrams.

15 INTERNATIONAL JURY

- 15.1 An International Jury will be appointed in accordance with RRS 91(b). Its decisions will be final as provided in RRS 70.5.

16 PENALTY SYSTEM

- 16.1 RRS Appendix P, Immediate Penalties for Breaking Rule 42, will apply except for the changes in Paragraph 16.2 and 16.3.
- 16.2 RRS P2.1 is changed to read: When a boat is penalized under P1 her penalty shall be a Two-Turns Penalty under RRS 44.2. If she fails to take it she shall be disqualified without a hearing.
- 16.3 RRS P2.2 and 2.3 will not apply.

17 SCORING

- 17.1 The Low Point System of RRS Appendix A will apply. RRS B8 is deleted.
- 17.2 For each event the sailing competition will consist of an opening series and a final race.
- 17.3 Sixteen (16) races are scheduled for each event. Of the sixteen (16) races, fifteen (15) are scheduled as opening races and one (1) as a final race.
- 17.4 All boats will progress to the final race.
- 17.5 One (1) race is required to be completed to constitute a regatta.
- 17.6 Six (6) races are required to be completed to constitute an opening series.
- 17.7 When fewer than five (5) opening races have been completed, a boat's series score will be the total of her race scores.
- 17.8 When five (5) or more opening races have been completed, a boat's series score will be the total of her race scores excluding her worst score. The score from the final race will not be excluded.
- 17.9 When eleven (11) or more opening races have been completed, a boat's series score will be the total of her race scores excluding her two worst scores. The score from the final race will not be excluded.

18 SUPPORT BOATS

- 18.1 Private or team support boats are not permitted.
- 18.2 Team Leaders, coaches and other support personnel may go afloat only in



craft supplied by the Organizing Authority, and clearly marked as such, from the day of the practice race through to the last race.

19 BERTHING

19.1 Boats shall be kept in their assigned places in the boat park.

20 RADIO COMMUNICATION

20.1 While on the water, athletes and coaches shall not carry equipment capable of making radio transmissions or receiving radio communications, except for equipment provided by the Organizing Authority. This restriction also applies to mobile telephones.

21 RIGHT TO USE NAME AND LIKENESS

21.1 By participating in the Singapore 2010 Youth Olympic Games Sailing Competition an athlete automatically grants to the organizing authority and its sponsors the right in perpetuity to make, use and show, from time to time at their discretion, any motion pictures and live, taped or filmed television and other reproductions of the athlete during the period of the competition without compensation.

22 PRIZES

22.1 The following medals and diplomas for the Singapore 2010 Youth Olympic Games Sailing Competition will be awarded:

First Place

First prize will be a gold medal and a diploma.

Second Place

Second prize will be a silver medal and a diploma.

Third Place

Third prize will be a bronze medal and a diploma.

23 INSURANCE

23.1 Each participating boat or participant shall be insured with valid third-party liability insurance with a minimum coverage of €500,000 per event or the equivalent. A photocopy of the insurance certificate shall be submitted to the



Organizing Authority at registration.

24 SECURITY

- 24.1 Entry to the National Sailing Centre and race area is restricted to personnel officially accredited by the SYOGOC only.

25 DISCLAIMER OF LIABILITY

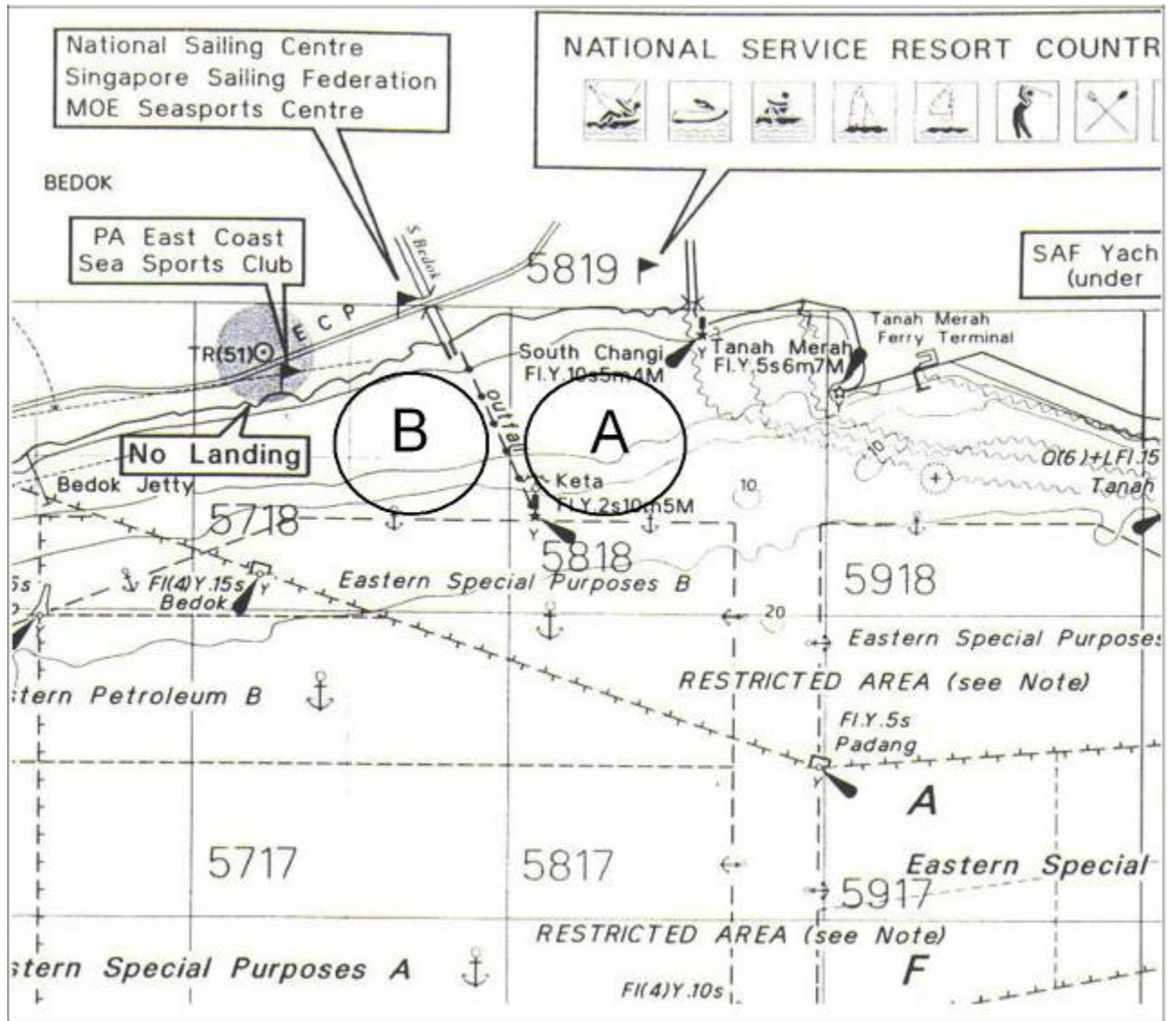
- 25.1 Athletes participate in the sailing competition entirely at their own risk. See RRS 4, Decision to Race. The Organizing Authority will not accept any liability for material damage or personal injury or death sustained in conjunction with or prior to, during, or after the sailing competition.

26 DOPING CONTROL

- 26.1 Doping control will be conducted in accordance with the World Anti-Doping Code and IOC Anti-Doping Policy. In-Competition testing will be carried out at the National Sailing Centre. In addition, pre-competition testing could be conducted by the IOC during the period of the Youth Olympic Games.

ATTACHMENT 1

RACING AREA



ATTACHMENT 2 COURSES

L

Course: Windward/Leeward

Signal	Marking Rounding Order
L2	Start - 1 - 4s/4p - 1 - Finish
L3	Start - 1 - 4s/4p - 1 - 4s/4p - 1 - Finish
L4	Start - 1 - 4s/4p - 1 - 4s/4p - 1 - 4s/4p - 1 - Finish

LS

Course: Windward/Leeward With Slalom Finish

Signal	Marking Rounding Order
LS2	Start - 1 - 4s/4p - 1 - 4p - S1 - S2 - S3 - Finish
LS3	Start - 1 - 4s/4p - 1 - 4s/4p - 1 - 4p - S1 - S2 - S3 - Finish
LS4	Start - 1 - 4s/4p - 1 - 4s/4p - 1 - 4s/4p - 1 - 4p - S1 - S2 - S3 - Finish

I

Course: Inner Trapezoid

Signal	Marking Rounding Order
I1	Start - 1 - 4a/4p - 1 - 2 - 3p - Finish
I3	Start - 1 - 4a/4p - 1 - 4a/4p - 1 - 2 - 3p - Finish
I4	Start - 1 - 4a/4p - 1 - 4a/4p - 1 - 4a/4p - 1 - 2 - 3p - Finish

O

Course: Outer Trapezoid

Signal	Marking Rounding Order
O2	Start - 1 - 2 - 3a/3p - 2 - 3p - Finish
O3	Start - 1 - 2 - 3a/3p - 2 - 3a/3p - 2 - 3p - Finish
O4	Start - 1 - 2 - 3a/3p - 2 - 3a/3p - 2 - 3a/3p - 2 - 3p - Finish

IS

Course: Inner Slalom

Signal	Marking Rounding Order
IS2	Start - 1 - 4a/4p - 1 - 2 - 3p - S1 - S2 - S3 - Finish
IS3	Start - 1 - 4a/4p - 1 - 4a/4p - 1 - 2 - 3p - S1 - S2 - S3 - Finish
IS4	Start - 1 - 4a/4p - 1 - 4a/4p - 1 - 4a/4p - 1 - 2 - 3p - S1 - S2 - S3 - Finish

OS

Course: Outer Slalom

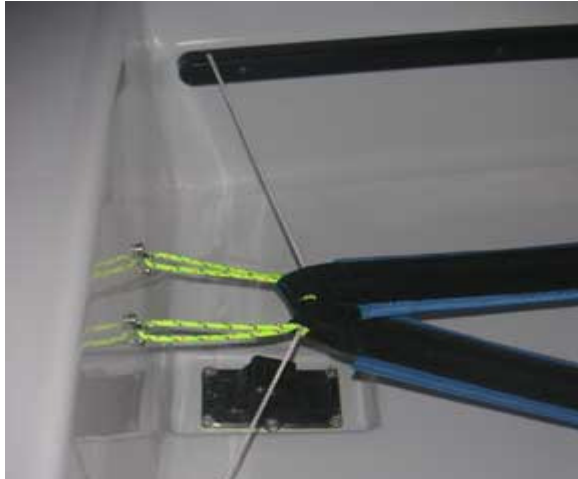
Signal	Marking Rounding Order
OS2	Start - 1 - 2 - 3a/3p - 2 - 3p - S1 - S2 - S3 - Finish
OS3	Start - 1 - 2 - 3a/3p - 2 - 3a/3p - 2 - 3p - S1 - S2 - S3 - Finish
OS4	Start - 1 - 2 - 3a/3p - 2 - 3a/3p - 2 - 3a/3p - 2 - 3p - S1 - S2 - S3 - Finish

ATTACHMENT 3

Byte CII Permitted Modifications

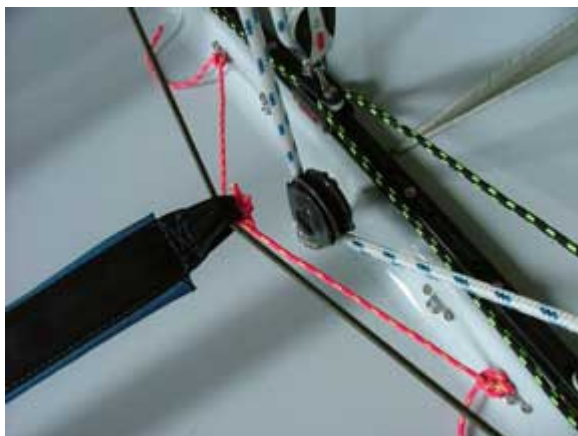
1. Hiking straps

Boats are supplied with two hiking straps installed and a shock chord “lift” running through the aft loop of both straps and to the grab rails on the cockpit walls.



Shock chord may also be used to lift the front of the straps but, if the competitor does this, they shall supply their own additional shock chord. Shock chord at the front of the straps may only be attached to the traveller cleats. See left. **PLEASE NOTE: The cleat configuration at left has been changed for the Games' boats. Cleats**

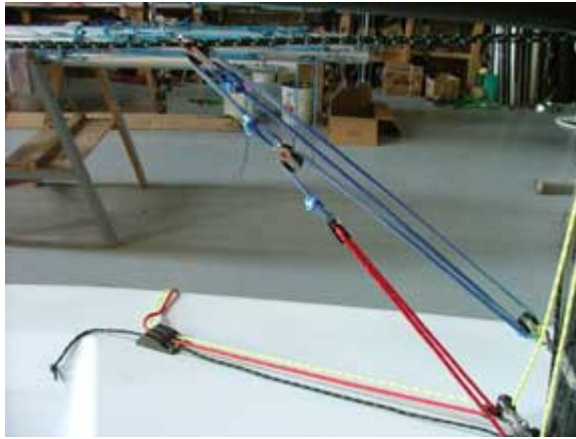
are now inboard on the slope of the carling. See at right.



Competitors may also rig the boat with only one strap instead of two. It may be “lifted” from either end, or both, but the front end of the strap shall be attached to two or more of the deck straps. If attaching the hiking strap to all four deck straps, the competitor shall supply their own extra line – minimum 4mm.

2. Sail Controls

The boat is supplied with the boom vang rigged with a 12:1 purchase and the outhaul rigged with a 4:1 purchase. (2:1 is at the clew as shown and 2:1 is at the deck control).

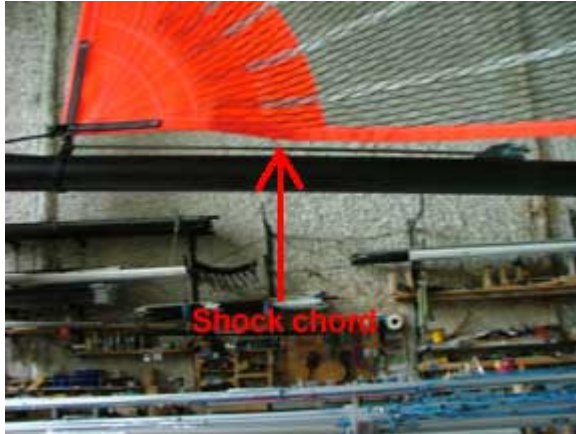


The Cunningham is supplied with an 8:1 purchase. See below left. These are the maximum purchases allowed on these controls but nothing shall prevent the competitor from sailing with less purchase including the removal of a block, as in the removal of the outhaul block pictured below, right. If sailing with less purchase, the control line shall not be cut.



The key of the vang may be secured in the boom fitting by means of a piece of shock chord tied around the boom and slid over the fitting.





A short length of shock chord is supplied with the boats and may be attached to the clew and taken to the clamcleat on the boom to serve as an inhaul. See at left.

3. Mainsheet

The mainsheet is supplied as a 4:1 system using a bridle attached to twin traveller cars on the traveller track. A single traveller block with becket, which is normally attached to a single traveller car, is attached to the apex of the bridle as pictured below left. Bridle length is approx. 40.5 cms, shackle to car. The final purchase shall be taken through the ratchet block on the cockpit floor at all times except that, WHEN REACHING OR RUNNING, it may be taken directly from the boom. Competitors may reduce the ratio to 3:1 by tying off the end of the sheet to the lower sheave of the boom block, below right. If doing so, the entire race shall be sailed in this configuration. Nothing shall preclude the competitor changing the length of the bridle with knots or splices but the line shall not be cut. Should the competitor

want to lengthen it beyond the capability of the line supplied, they may use their own line but with a minimum diameter of 3 mm.





The competitor may also set up the boat with a single traveller car by attaching the single bucket block to one of the cars, as in the photo at left, and taping the other car out of the way at the end of the traveller bar.

The control lines controlling the position of the traveller car(s) shall be used as supplied with a 2:1 purchase in both the twin and single car configuration.

4. Tiller Extensions

The boats will be supplied with a 90 cm Optiparts tiller extension. Competitors may bring their own extensions but shall use the existing fitting on the tiller to connect their tiller extension.



Additional Information (Not part of the Notice of Race)

PRE-EVENT BOAT CHARTER

1. Introduction

The National Sailing Centre, Singapore operates year round at near maximum capacity; therefore availability of equipment and thus training places prior to the official YOG venue opening date of 10 August is limited within the constraints of the venue. In line with these constraints training places at the venue will be allocated to a maximum of 10 foreign sailors in both the Byte & Techno classes at any one time and for a maximum of 7 days as outlined in the booking form in order to afford training time to as many participants as possible.

2. Condition of Entry:

Only those selected to represent their country in YOG are eligible to come and train at the National Sailing Centre, Singapore. Training partners who are not selected for the YOG will not be allowed.

3. Payment

Deposit of 50% is required by 28 June 2010. All bank charges should be borne by the sender. Balance Payment can be made upon arrival.

Bank details will be provided once a booking is accepted.

4. Boat/Board Charter

A maximum of 10 Byte CII class boats and 10 Techno 293 boards will be available for charter by foreign sailors and will be allocated based on first come first serve basis of receipt of a completed booking form.

BYTE CII – Used ex 2010 Worlds Boat (10 available)

Charter rates: SGD 749.00 per boat + Damage deposit of SGD 200

*Charter boat with **hull, mast, boom, tiller and foils only.***

Sailors are required to bring their own control lines, main halyard and sail.

For those sailors who do not own a Byte in their home country, a limited number of old training sails and control lines (5) are available for SGD 107 +



damage deposit of SGD 100.

Techno 293 - Used ex 2009 Asian Youth Games Board (10 Available)

Charter rates: SGD 535 per board + Damage deposit of SGD 200

*Charter board complete with **board, fin, centerboard, mast and boom only.***

Sailors are required to bring their own sail, outhaul, downhaul and uphaul lines.

5. Coach Boat

A limited number of coach boats are available for charter by national teams as follows:

- (a) 3.4m tiller steering inflatable

Charter rates: SGD 160.50 per boat per day + Damage deposit of SGD 200

- (b) 4.7m centre console inflatable

Charter rates: SGD 246.10 per boat per day + Damage deposit of SGD 200

The powerboat charter fee is inclusive of 1 jerry can of petrol. Extra petrol can be purchased at SGD 64.75 per jerry can.

Due to the limited amount of coach boats available, countries with only 1 sailor present may be asked to share a coach boat with another country, in this case costs of the coach boat would be shared equally between the sharing countries.

6. Training Hours

1000 hrs to 1700 hrs

7. Safety

All participants are required to adhere to the safety requirements set by the Federation. At all times when afloat, sailors and officials are required to wear personal buoyancy jackets. Personal buoyancy shall comply with appropriate national standard.



PRE-REGATTA BOAT CHARTER FORM

Name of Country Rep:	
Country	
Email	

Option: Please tick 1 only

Slot 1: Mon, 5 – Sun, 11 July 2010

Slot 2: Mon, 12 – Sun, 18 July 2010

Please return the form by **Wednesday, 23 June 2010** via email or fax to

Singapore Sailing Federation

1500 East Coast Parkway

National Sailing Centre

Singapore 468963

Email: info@singaporesailing.org.sg

Fax: +65 6448 0485

Boat Charter

Type of Boat	No. of Boats	Requested Slot No.	Charter Rates Per Boat	Amount
Used Byte CII			SGD 749.00	
Used Byte CII Training Sail			SGD 107.00	
Used Techno 293			SGD 535.00	
Total (SGD)				

Power Boat Charter

Type of Boat	No. of Boats	Requested Slot No.	Charter Rates Per Boat Per Day	Amount
3.4M Coach Boat			SGD 160.50 Incl. 1 jerry can of petrol	

4.7M Coach Boat			SGD 246.10 incl. 1 jerry can of petrol	
Total (SGD)				

Damage Deposit – To be refunded if no damage occurs (In SGD Cash only)

Type of Boat	No. of Boats	Damage Deposit Per Boat	Amount
Used Techno 293		SGD 200	
Used Byte CII		SGD 200	
Used Byte CII Sail		SGD 100	
3.4M Coach Boat		SGD 200	
4.7M Coach Boat		SGD 200	
Total Deposit			

Declaration

I/We acknowledge and accept the risks associated with participation in the pre-event training and waive all rights against and release Singapore Sailing in respect of any loss of life and injury to persons, or loss of or damage to property, suffered in connection therewith; and acknowledge that participation in the training is entirely at my/our own risk and responsibility.

Signature of country representative

Designation of representative within MNA



Additional Information (Not part of the Notice of Race)
INFORMATION

Singapore Youth Olympic Games Organizing Committee
01 Kay Siang Road
Singapore 248922
SINGAPORE